



# GMIA Airfield Update Newsletter

## June 2013

Greetings!

Thank you for your interest in the latest edition of the General Mitchell International Airport (GMIA) Airfield Update. Now that summer is well underway, we have made significant progress on the construction projects that have been planned for this year. The work on the tunnel that passes beneath our main north-south runway (1L/19R) that necessitated its closure for much of the month of May is complete. Additionally, as of June 28th, the refurbishment of our main east-west runway (7R-25L) is finished as well.

Even with this reopening, please be aware that Rwy 7R/25L will still be subject to daily closures from around 8:00am through around 5:00pm during the week, and possibly Saturdays, through mid July. This is due to cranes in close proximity to the runway that will be installing pilings for a new bridge over Howell Ave. The bridge will be part of a new airport perimeter road that will increase safety by allowing airport vehicles to traverse the airport without having to cross an active runway.

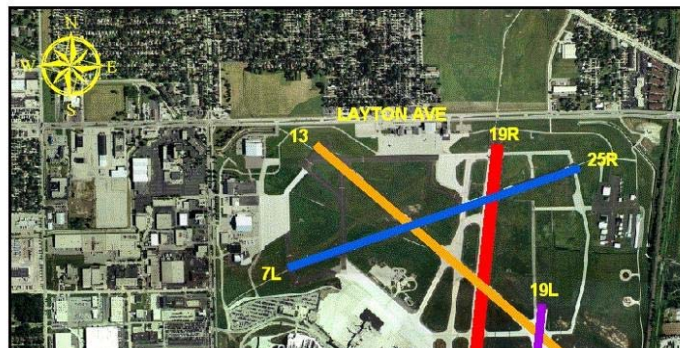
Finally, there will be an additional two day closure of Rwy 1L/19R again in August for some navigational equipment maintenance. Once the dates are known, they will be passed along. Future Airfield Update Newsletters will have this and other airfield operational information as it becomes available.

### Runway 7R/25L

Daily closures through mid July

### Runway 1L/19R

Open, except for a two day closure planned for



August

**Runway 1R/19L**

Open

**Runway 13/31**

Open

**Runway 7L/25R**

Open

