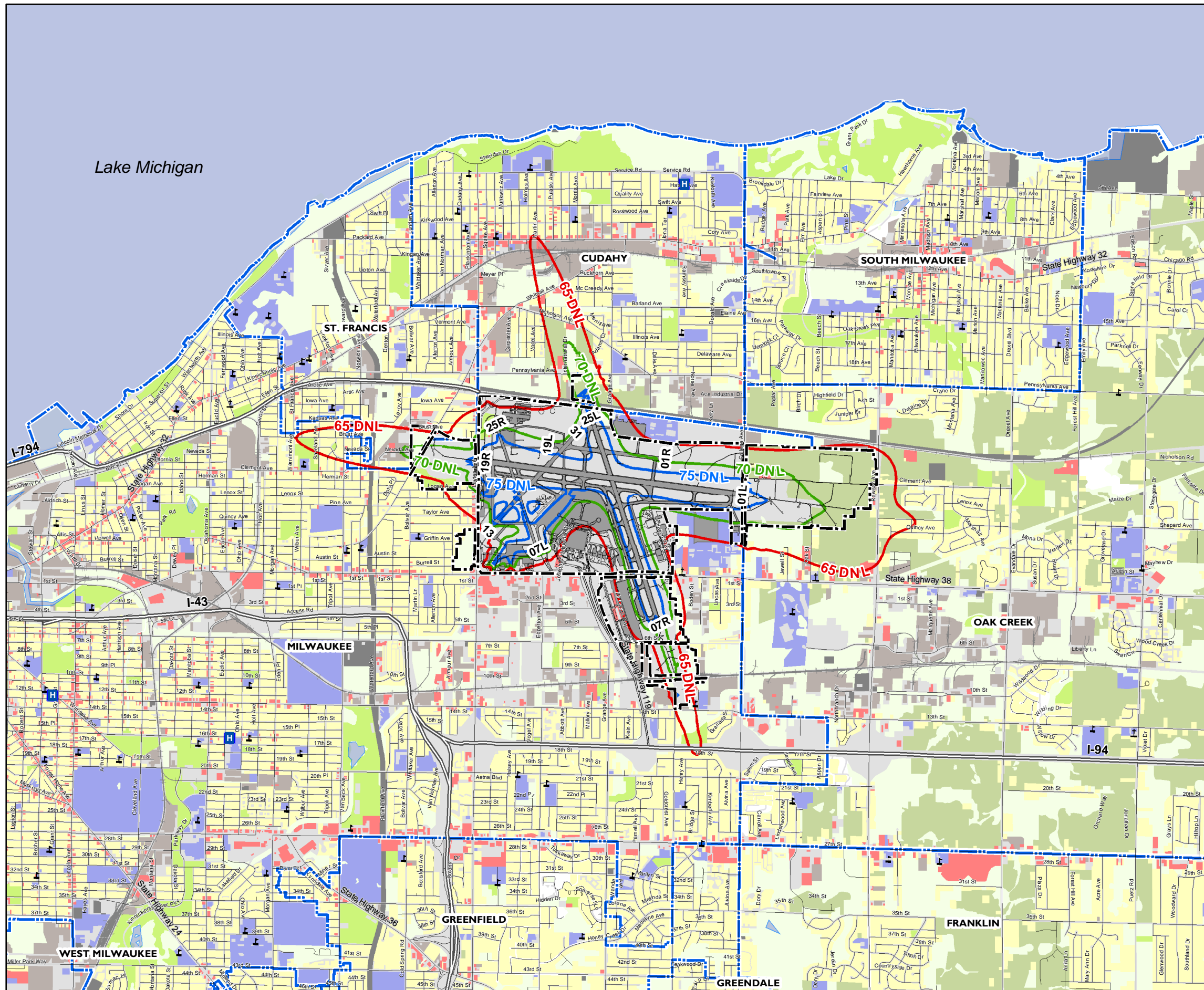


Figure I1
Future 2009 Noise Exposure Map
 Generalized Existing Land Use



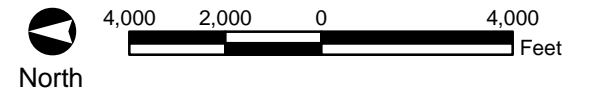
Legend

- 65 DNL Contour (v6.2)
- 70 DNL Contour (v6.2)
- 75 DNL Contour (v6.2)

- RESIDENTIAL
- COMMERCIAL
- GOVERNMENT/INSTITUTIONAL
- INDUSTRIAL
- AGRICULTURAL
- RECREATIONAL
- OPEN LANDS
- COMMUNICATION/UTILITIES
- TRANSPORTATION
- COMMUNITY FACILITY
- MUNICIPAL BOUNDARY
- AIRPORT BOUNDARY

- H hospitals
- S schools
- C churches

Source: Milwaukee County, 2003



The 65 DNL contour contains approximately 2,260 acres, 1 school, 920 residential structures and 2,220 people.

The 70 DNL contour contains approximately 970 acres, no residential structures and no people.

The 75 DNL contour contains approximately 550 acres, no residential structures and no people.

Planning jurisdictions are shown on the map.

Noise measurement sites and flight tracks are depicted on the Noise Measurement Sites and Flight Tracks Maps.

Residential land use, as defined by FAR Part 150, is an incompatible use without proper sound attenuation within the 65 DNL or greater contour.

The Noise Exposure Maps and accompanying documentation for the Noise Exposure Map for General Mitchell Milwaukee International Airport, submitted in accordance with FAR Part 150 with the best available information, are hereby certified as true and complete to the best of my knowledge and belief.

In addition, it is hereby certified that the public was afforded the opportunity to review and comment on the document and its contents.

Signed _____ Date _____

