



# MASTER PLAN UPDATE

FALL 2007

## To Our Airport Neighbors:

A study is underway that will update the Master Plan for Milwaukee County's Lawrence J. Timmerman Airport. The study is being conducted by Coffman Associates, an airport consulting firm, to review Timmerman's runway, taxiway and hangar facilities and identify what improvements need to be made in order to accommodate general aviation needs over the next 20 years.

The consultant and a Technical Advisory Committee have reviewed an extensive amount of information, statistics and flight activity projections for Timmerman. They then evaluated a number of airfield improvement alternatives that would best meet the needs of the corporate and private planes that will be using Timmerman over the next two decades. The team's preferred concept, Alternative E, is presented on Page 2 of this newsletter. Alternative E addresses a safety and capacity issue by adding 300 feet of pavement at each end of the northwest/southeast runway, which provides a safer runway length in case a pilot must abort a takeoff. The place where aircraft land on that runway would remain the same as it is today, however.

One of the Study team's goals is for Timmerman to remain a good neighbor. An advantage of the Alternative E concept is that there is minimal change to the aircraft noise contour over what is heard today in surrounding neighborhoods.

The Industrial Focus Group of the City of Milwaukee's Department of City Development, when writing its Northwest Side Area Plan, said, "The continued operation of Timmerman Field, and possible expansion, is necessary to encourage industrial investment and development in this area." This seems ever more important with the number and size of new business construction along the Highway 45 corridor. Timmerman is ideally situated to serve many of the air transportation needs of these growing corporations.

A long-time tenant of Timmerman, the Oldenberg Group, recently wrote, "Timmerman Field has been a fixture on the northwest side of Milwaukee for years, providing easy access to the Milwaukee area. Business aviation continues to grow. To take advantage of this and the economic value it brings, it is important to continue to upgrade the runways and facilities at Timmerman Field."

With approximately 128 based and itinerant aircraft, Timmerman is responsible for a healthy economic impact not just in Milwaukee County, but in surrounding counties as well. An economic impact study showed that in 2005, Timmerman generated:

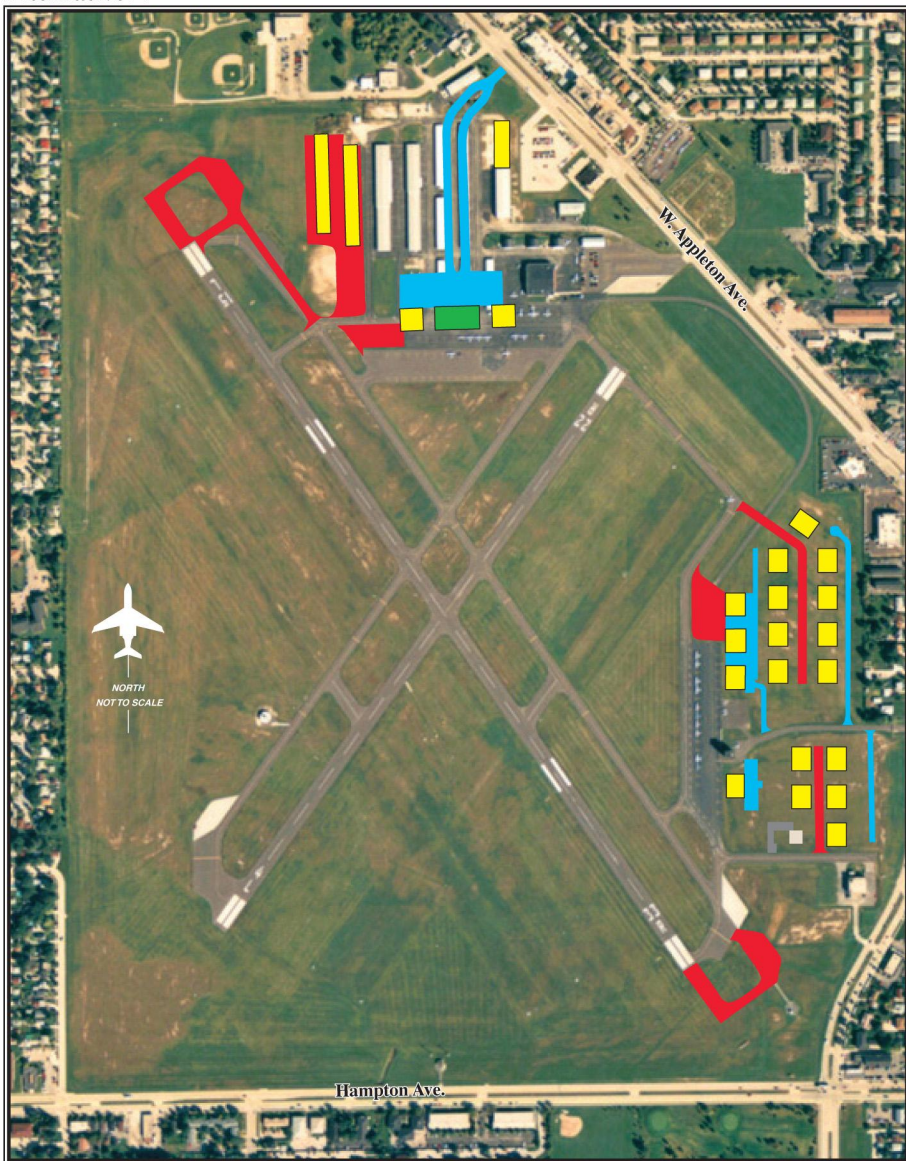
- 72 direct, induced and indirect jobs
- \$3.2 million of direct, induced and indirect income
- \$4.9 million of business revenue
- \$210 thousand of local purchases
- \$362 thousand in state and local taxes

You are welcome to visit with members of the Study team at the Master Plan Public Information Workshop, which will be held on Tuesday, December 4, 2007 at 2:00 – 4:00 p.m. and 6:00 – 8:00 p.m., LaQuinta Inn, Highway 100 and Silver Spring.

Sincerely,

Barry Bateman  
*Airport Director*

## Alternative E



Alternative E has been recommended by the consultant and Technical Advisory Committee as the most cost-effective way to provide additional runway length for the safety of departing aircraft. Alternative E also calls for the replacement of some aging aircraft hangars and the construction of new hangars that will accommodate corporate and private aircraft.

### LEGEND

■ New Airfield Pavement

■ Hangars

■ Terminal / Hangar

■ New road / Parking



## DNL 65\* Noise Contours



With Alternative E, the annual average noise contour, represented by the DNL-65 line, remains on the airfield, just as it does today.

### LEGEND

— Current DNL-65 Noise Contour      — Alt. E-DNL 65 Noise Contour (with pavement extended)

\* DNL is defined as the average A-weighted sound level as measured in decibels during a 24-hour period

**Public  
Information  
Workshop**

**Day:**  
Tuesday

**Date:**  
Dec. 4, 2007

**Time:**  
2:00-4:00 p.m.  
and 6:00-8:00 p.m.

**Place:**  
LaQuinta Inn  
Highway 100 & Silver  
Spring

**Spotlight On: Civil Air Patrol**

One of the most active tenants at Timmerman is the Civil Air Patrol (CAP). The organization operates 12 aircraft out of its hangar, which was constructed in 1964.

CAP members are volunteers, ranging from youth interested in aviation to senior military officers. They donate their time and skills to perform Search and Rescue missions, Homeland Security missions, counter drug missions and aerospace education, in support of local law enforcement. CAP also does community service work on the local and state levels, including disaster relief efforts, and provides mentoring to youth in local schools and social service agencies.

To accomplish their airborne missions, the CAP aircraft are equipped with high tech spectral imaging hardware, “in the air” real-time photo transmission capability and state-of-the-art radio communications equipment.

One of the senior CAP staff members writes: “Many of us in CAP grew up with Timmerman Airport as our home. From the very beginning, when our parents took us to the field on a Sunday afternoon to see the aircraft land and take off, a dream was born. Many of us followed that dream, training and struggling to take flying lessons; paying for them by mowing lawns and working on paper routes to obtain those precious flight hours. Throughout those formative years, Timmerman Airport was there for us and we knew it as home. Now that we are older, we are sharing that dream with young people as it was shared with us. Timmerman is still our home and will become the home for many more pilots and citizens for years to come. Timmerman allows us to serve our country in the name of CAP. Thank you, Timmerman Airport, for being there for us and continuing to be there for future generations who are proud of you and our ability to give back to you a small token of what you have given to us.”

Milwaukee County’s



C/O General Mitchell International Airport  
5300 S. Howell Avenue  
Milwaukee, Wisconsin 53207

