



GMIA Airfield Update Newsletter

September 2013

Greetings!

Thank you for your interest in the latest edition of the General Mitchell International Airport (GMIA) Airfield Update. As Summer comes to an end, September brings a gradual slowing of airfield projects and upkeep. It also reminds us to start planning for the upcoming Winter season. The interim between seasons also brought the airport's annual FAA inspection and our triennial emergency training exercise. Both proved to be very successful.

The construction near our main east/west runway (Rwy 7R/25L) continues due to infrastructure work on Howell Ave. It is now being conducted intermittently through mid-November. When work is being done, Rwy 7R/25L is subject to daily closures from around 8:00am through about 5:00pm. Depending on circumstances, construction may also occur on Saturdays. These closures are allowing cranes to install pilings for a new bridge over Howell Ave. The bridge will be part of a new airport perimeter road that will increase safety by allowing airport vehicles to traverse the airport without having to cross an active runway.

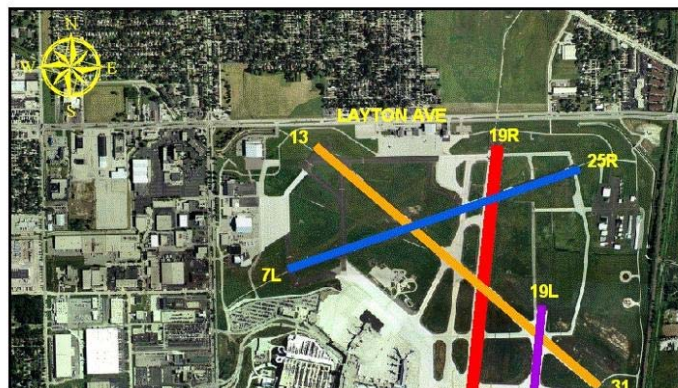
Thank you again for staying up to date on the activities of GMIA. Future Airfield Update Newsletters will continually strive to keep you informed of the latest events influencing aircraft operations.

Runway 7R/25L

Intermittent daily closures through mid November.

Runway 1L/19R

Open



Runway 1R/19L

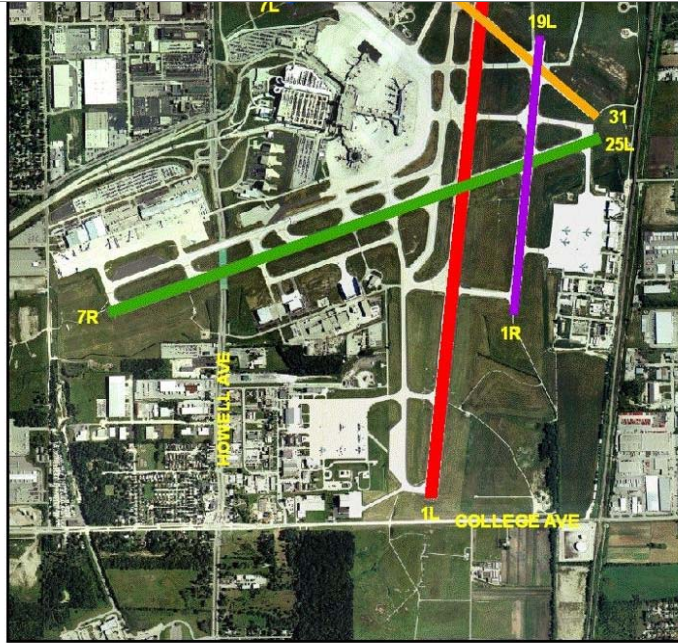
Open

Runway 13/31

Open

Runway 7L/25R

Open



Thank you for reading the GMIA Airfield Update Newsletter. Visit our [Airfield Update](#) page for more information.

