



GMIA Airfield Update Newsletter

August 2013

Greetings!

Thank you for your interest in the latest edition of the General Mitchell International Airport (GMIA) Airfield Update. August is turning out to be a busy month. Between the normal summer airfield upkeep and construction projects, there will be more than usual air traffic the first weekend as well. By the time you read this, the National Governor's Conference will be underway, with numerous attendees arriving and departing via corporate aircraft. The Milwaukee Air and Water Show will also be on August 3rd and 4th. Consequently, there are additional and varied aircraft that will be using GMIA. There may be a few additional transient aircraft as the Experimental Aircraft Association Convention, held annually in Oshkosh, comes to a close. The majority of aircraft associated with each of these events, including some former military jets, will be using the ramps on the north side of the airport.

The construction anticipated near our main east/west runway (Rwy 7R/25L) continues due to infrastructure work on Howell Ave. It is now being planned intermittently from August 19th through mid-November. When work is being done, Rwy 7R/25L will be subject to daily closures from around 8:00am through about 5:00pm. Depending on circumstances, construction may also occur on Saturdays. These closures will allow cranes to install pilings for a new bridge over Howell Ave. The bridge will be part of a new airport perimeter road that will increase safety by allowing airport vehicles to traverse the airport without having to cross an active runway.

Finally, there will be a two day closure of the main north/south runway (Rwy 1L/19R) in August for some navigational equipment maintenance that will need to be coordinated with the above construction. As of this writing, dates for this work have not been set.

Thank you again for your interest in GMIA. Future Airfield Update Newsletters will continually strive to keep you up to date on the latest events influencing aircraft operations.

Runway 7R/25L

Intermittent daily closures from August 19th through mid November.

Runway 1L/19R

Open, except for a two day closure planned for August

Runway 1R/19L

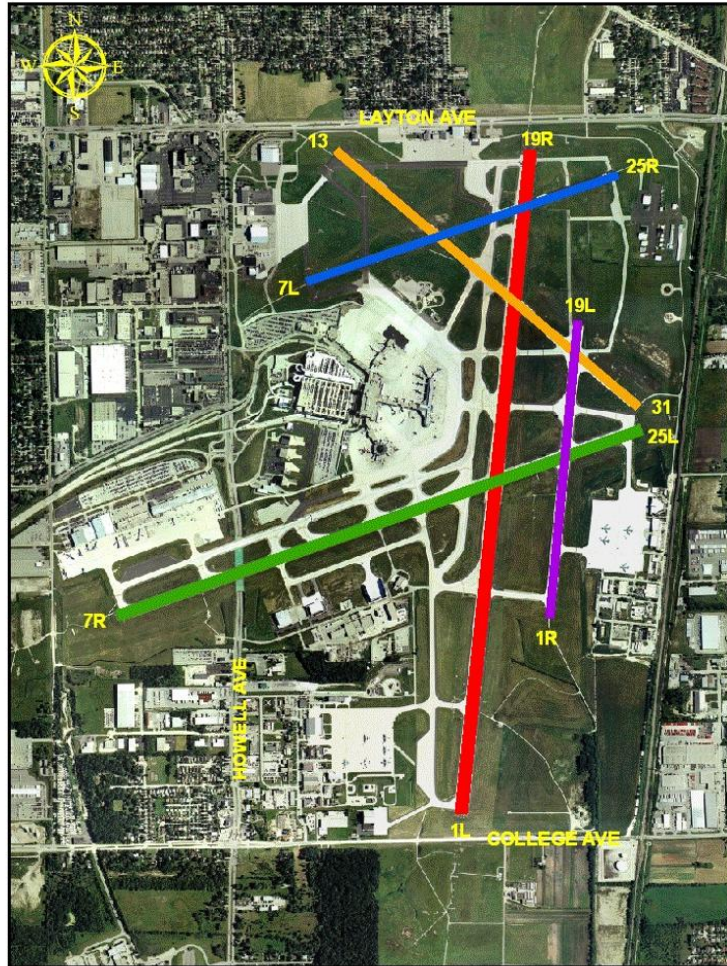
Open

Runway 13/31

Open

Runway 7L/25R

Open



Thank you for reading the GMIA Airfield Update Newsletter. Visit our [Airfield Update](#) page for more information. You can sign up to receive future communications by clicking the button below.

Join Our Mailing List!

MILWAUKEE COUNTY'S



GENERAL
MITCHELL
INTERNATIONAL AIRPORT